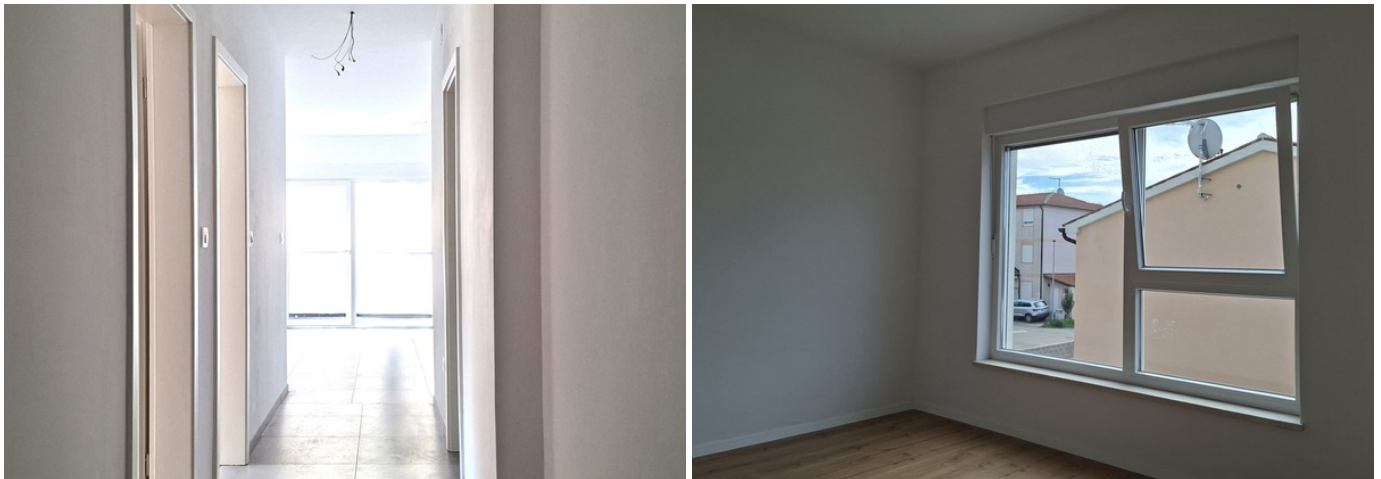




APARTMENT IN A NEW BUILDING NEAR THE SEA

 Medulin

 **203,500 €**
3,634 €/m²



The municipality of Medulin is located in the very south of the Istrian Peninsula on the coast. Medulin, once a fishing village, is today a modern tourist center that has emerged as one of the most desirable tourist destinations in Croatia in the last ten years, as evidenced by the largest number of overnight stays in recent years. In addition to its convenient location, excellent transport connections also contribute to the strong development of Medulin. The proximity of the highway and Pula Airport at a distance of 7.5 km.

This high-quality 56m² apartment in a new building with a total of two floors in a top position is located in Medulin, not far from the sea. The building was built in 2024. The apartment consists of a hallway, 2 bedrooms, a living room, dining room and open space kitchen, one



bathroom and one balcony. The apartment is equipped with PVC joinery with roller shutters, the floors are made of quality ceramics. The heating and cooling system is regulated by an air conditioning unit. Parking for tenants is provided in front of the building. The apartment is very comfortable and well-lit, with a well-designed layout that makes the most of every square meter of adequate space.

The great advantage of this property is that you can arrange it to your own taste and the accompanying facilities such as banks, schools, kindergartens, beaches, promenades are located in the immediate vicinity of just a few minutes' walk. The location, which is not far from the center of Medulin, makes it a perfect choice. This is an ideal apartment for family life, but also an excellent opportunity for investment due to its attractive location and spacious layout.

FOR ALL OTHER INFORMATION, CALL:

+385 99 2004 613

mirjana.tomicic@family-nekretnine.hr

Mirjana Tomičić

Assistant in mediation

Summary

LOCATION	Medulin	PROPERTY ID	2741
PRICE	203,500 €	TYPE	Flat
FLAT TYPE	Two rooms	AREA	56 m ²
YEAR BUILT	2024.	YEAR RENOVATED	-
ORIENTATION	-	NUMBER OF FLOORS	-
ROOMS	3	BEDROOMS	2
BATHROOMS	1	TOILETS	-
DISTANCE FROM SEA	-	DISTANCE FROM CENTER	-
GARDEN AREA	-	PARKING SPACES	1
POOL	-	VIEW AT	-
ACCESS ROAD	Yes	JOINED ROOMS	-
CEILING HEIGHT	250 cm	ELEVATOR	-
HEATING	Air conditioning	JOINERY	PVC
WALLS MATERIAL	Brick, Gypsum partitions	WALLS CONDITION	Very good
TILES	Very good	PARQUET	There is none
FACADE	Excellent, Thermal insulation	ROOF	-
INTERNAL STAIRS	Very good	EXTERNAL STAIRS	-
OWNERSHIP TYPE	Orderly	CERTIFICATE OF OWNERSHIP	Yes
USAGE PERMIT	Yes	ENERGY CERTIFICATE	-



Extra features

- Balcony

Infrastructure

- Electricity
- Water
- Sewerage

[View original listing](#)